

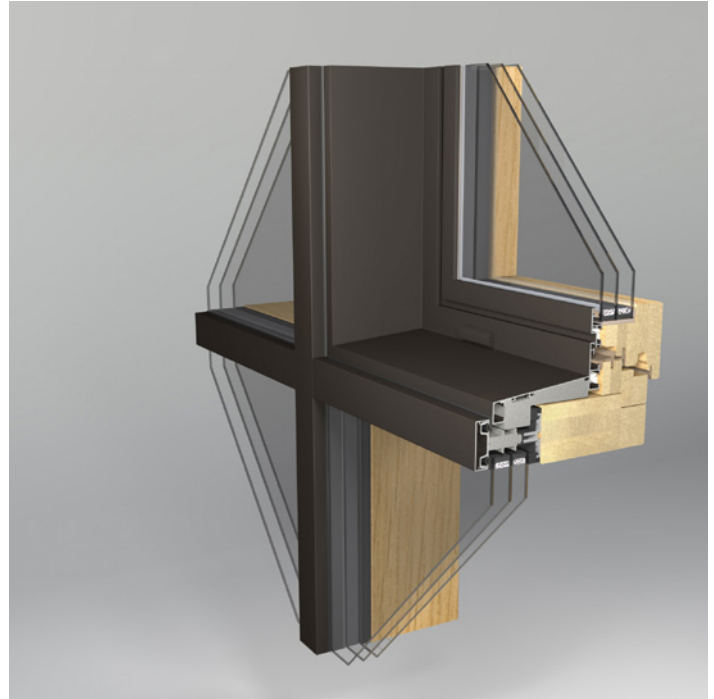
GAMA 78 PORTAL

Uw	0.81 W/m ² *K**
Rw	35 dB**
Pane	2-3 glass unit
Warranty	5 years.*

Exceptional facade construction

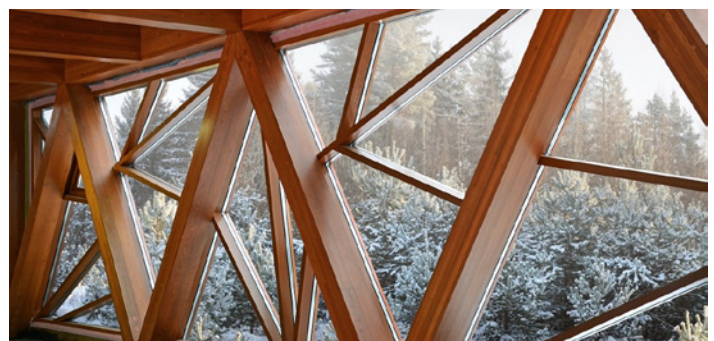
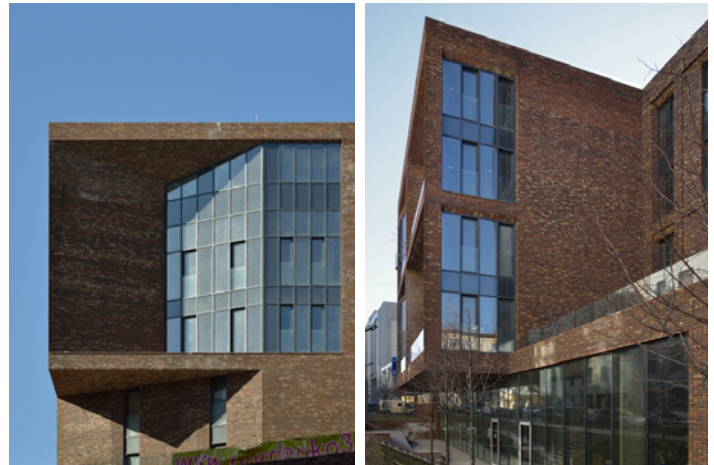
Construction designed together with the technological partner Gutmann. The system is special because it can be mounted in different places and facade depths.

It fits with modern architecture and perfectly suits for high buildings.



MATERIAL USED

Types of wood:	tenon pine, non-tenon pine, meranti, larch, oak, etc.
Painting:	Teknos/Finland/
Aluminium profiles:	Gutmann/Germany/
Furniture:	Roto/Germany/ G. U./Germany/
Glasses:	Saint-Gobain/France/
Gaskets:	Schlegel Q-Lon/Germany/
Handles:	Hoppe Atlanta/Germany/



* The warranty for window outdoor topping is provided subject to the type of wood and painting.

** Uw and Rw calculated for a window:

Measurements: height 1480 mm, width 1230 mm. Type of opening: internal opening, right. Bindings: ROTO. Fastening: 7 fixing points in perimeter. Gaskets: SCHLEGEL foam. Sealing sets: 2. Pane: glass unit, 4-14Ar-4-14Ar-4 (two glasses covered with low-e coating, openings filled with argon gas, spacers - Swispacer Ultimate).