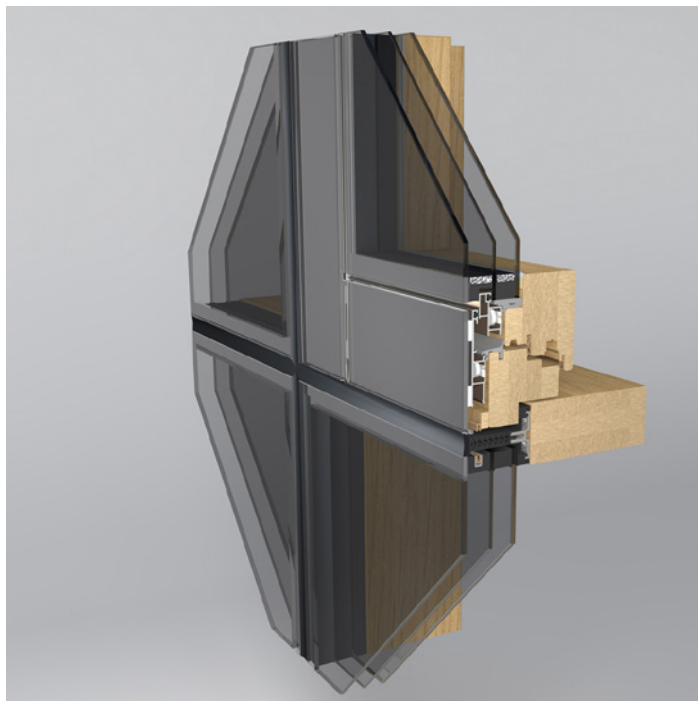


# GAMA GLASS

<b>Uw</b>	0.90 W/m <sup>2</sup> *K**
<b>Rw</b>	35 dB**
<b>Pane</b>	2-3 glass unit
<b>Warranty</b>	5 years.*

## Exceptional facade construction

Construction in one of the places where only the glass can be seen from the outside. This system was designed together with technological partner Gutmann.



### MATERIAL USED

<b>Types of wood:</b>	tenon pine, non-tenon pine, meranti, larch, oak, etc.
<b>Painting:</b>	Teknos/Finland/
<b>Aluminium profiles:</b>	Gutmann/Germany/
<b>Furniture:</b>	Roto/Germany/ G. U./Germany/
<b>Glasses:</b>	Saint-Gobain/France/
<b>Gaskets:</b>	Schlegel Q-Lon/Germany/
<b>Handles:</b>	Hoppe Atlanta/Germany/



\* The warranty for window outdoor topping is provided subject to the type of wood and painting.

\*\* Uw and Rw calculated for a window:

Measurements: height 1480 mm, width 1230 mm. Type of opening: internal opening, right. Bindings: ROTO.

Fastening: 7 fixing points in perimeter. Gaskets: SCHLEGEL foam. Sealing sets: 2. Pane: glass unit, 4-14Ar-4-14Ar-4 (two glasses covered with low-e coating, openings filled with