

GAMA T78 T H E R M

Uw	0.70 W/m ² *K**
Rw	35 dB**
Pane	2-3 glass unit
Warranty	5 years.*

Window profile characteristics:

- Sliding doors
- Thermal profile
- Arched windows

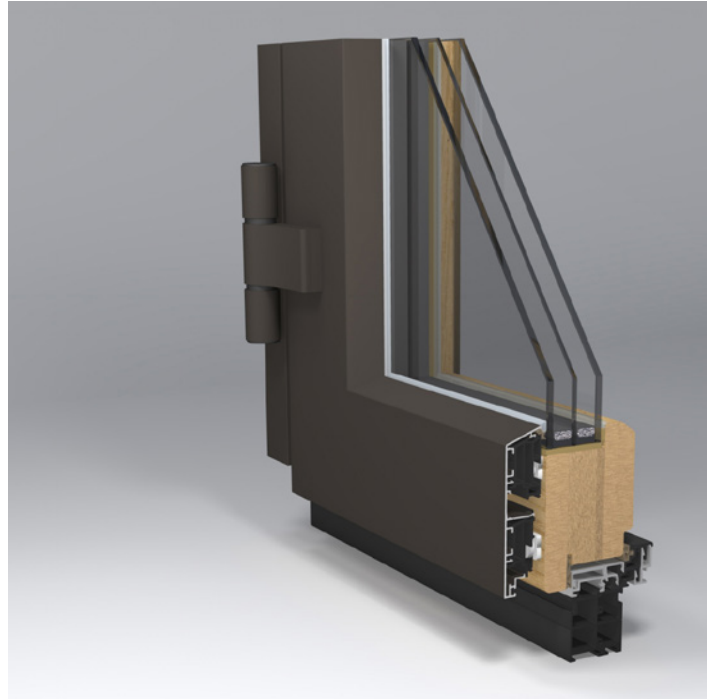
For Passive Houses

External doors designed for passive houses, energetic efficiency of which is the greatest.

The profiles are of aluminium coated from the outside and additionally insulated. Because of additional gaskets with air cameras it best suppresses the cold and keeps the internal warmth of the house. Arched exterior doors and windows as well as sliding doors of similar design can be provided. Glass unit size is up to 48 mm.

MATERIAL USED

Types of wood:	tenon pine, non-tenon pine, meranti, larch, oak, etc.
Painting:	Teknos/Finland/
Aluminium profiles:	Gutmann/Germany/
Furniture:	Roto/Germany/ G. U./Germany/
Glasses:	Saint-Gobain/France/
Gaskets:	Schlegel Q-Lon/Germany/
Handles:	Hoppe Atlanta/Germany/



* The warranty for window outdoor topping is provided subject to the type of wood and painting.

** Uw and Rw calculated for a window:

Measurements: height 1480 mm, width 1230 mm. Type of opening: internal opening, right. Bindings: ROTO. Fastening: 7 fixing points in perimeter. Gaskets: SCHLEGEL foam. Sealing sets: 2. Pane: glass unit, 4-14Ar-4-14Ar-4 (two glasses covered with low-e coating, openings filled with argon gas, spacers - Swispacer Ultimate).